

ALL OF THIS SUBDIVISION IS LOCATED IN A CHESAPEAKE BAY PRESERVATION AREA WHICH IS SUBJECT TO THE PROVISIONS OF SECTION 24-106.3 OF CHAPTER 24 OF THE COUNTY CODE, OR ITS SUCCESSOR.

LOTS MARKED WITH AN ASTERISK (\*) HAVE LIMITATIONS FOR DWELLING SHAPE, SIZE AND LOCATION. FOR DETAILS REFER TO CONSTRUCTION PLANS ON FILE IN THE DEPARTMENT OF PLANNING.

LOTS MARKED WITH DOUBLE ASTERISK (\*\*) MAY CONTAIN WETLANDS AS DETERMINED AT THE TIME OF RECOGNITION OF THE PLAT. WETLAND DISTURBANCE OUTSIDE OF THE DESIGNATED WETLAND IMPACT AREAS WILL REQUIRE APPROVAL FROM THE USFWS. ADDITIONAL REQUIREMENTS MAY BE IMPOSED ON THESE LOTS PRIOR TO THE ISSUANCE OF BUILDING PERMITS. SEE CONSTRUCTION PLANS ON FILE IN THE DEPARTMENT OF PLANNING FOR ADDITIONAL DETAILS.

EASEMENT BEARINGS		
NO.	LENGTH	BEARING
E1	45.01'	N24°51'32" W
E2	20.98'	N68°25'17" W
E3	17.70'	N46°35'27" E
E4	76.65'	N48°40'28" W
E5	115.65'	S58°56'45" E
E6	135.12'	S87°48'03" E
E7	208.71'	S30°55'48" W

**LEGEND**  
 \* DENOTES MONUMENTS TO BE SET  
 ○ DENOTES EXISTING MONUMENTS

ROAD LINE & CURVE DATA						
NO.	RADIUS	ARCH	CH. BEARING / LINE BEARING	CHORD / DIST.	DELTA	TANGENT
L1			S21°44'20" W	100.00'		
C1	25.00'	39.08'	N23°02'21" W	35.22'	89°33'23"	24.81'
L2			N67°49'03" W	54.66'		
C2	350.00'	115.70'	N58°20'50" W	115.18'	18°56'28"	58.38'
L3			N48°52'37" W	73.33'		
C3	25.00'	43.20'	S81°37'15" W	38.02'	99°00'16"	29.27'
C4	775.00'	67.32'	S29°37'48" W	67.30'	4°58'38"	33.68'
L4			S27°08'30" W	60.35'		
C5	40.00'	39.13'	S00°53'05" E	37.58'	56°03'09"	21.29'
C6	50.00'	230.10'	N77°04'28" W	74.60'	263°40'35"	
C7	40.00'	19.29'	N40°57'13" E	19.10'	27°37'26"	9.83'
L5			N27°08'30" E	93.28'		
C8	825.00'	201.98'	N34°09'19" E	201.48'	14°01'39"	101.50'
C17	25.00'	38.68'	S04°32'27" E	34.94'	88°40'18"	24.43'
L9			S48°52'37" E	82.37'		
C18	300.00'	99.17'	S58°20'50" E	98.72'	18°56'28"	50.04'
L10			S67°48'03" E	53.89'		
C19	25.00'	39.46'	N66°57'59" E	35.49'	90°26'37"	25.19'

# COUNTRYSIDE GLEN SECTION A

TUCKAHOE DISTRICT HENRICO COUNTY, VIRGINIA  
 OCTOBER 6, 2006 SCALE: 1"=50'

STEVEN B. KENT & ASSOCIATES, P.C.  
 LAND SURVEYORS  
 151 BRICK ROAD  
 RICHMOND, VIRGINIA 23220  
 TEL 804-643-6113

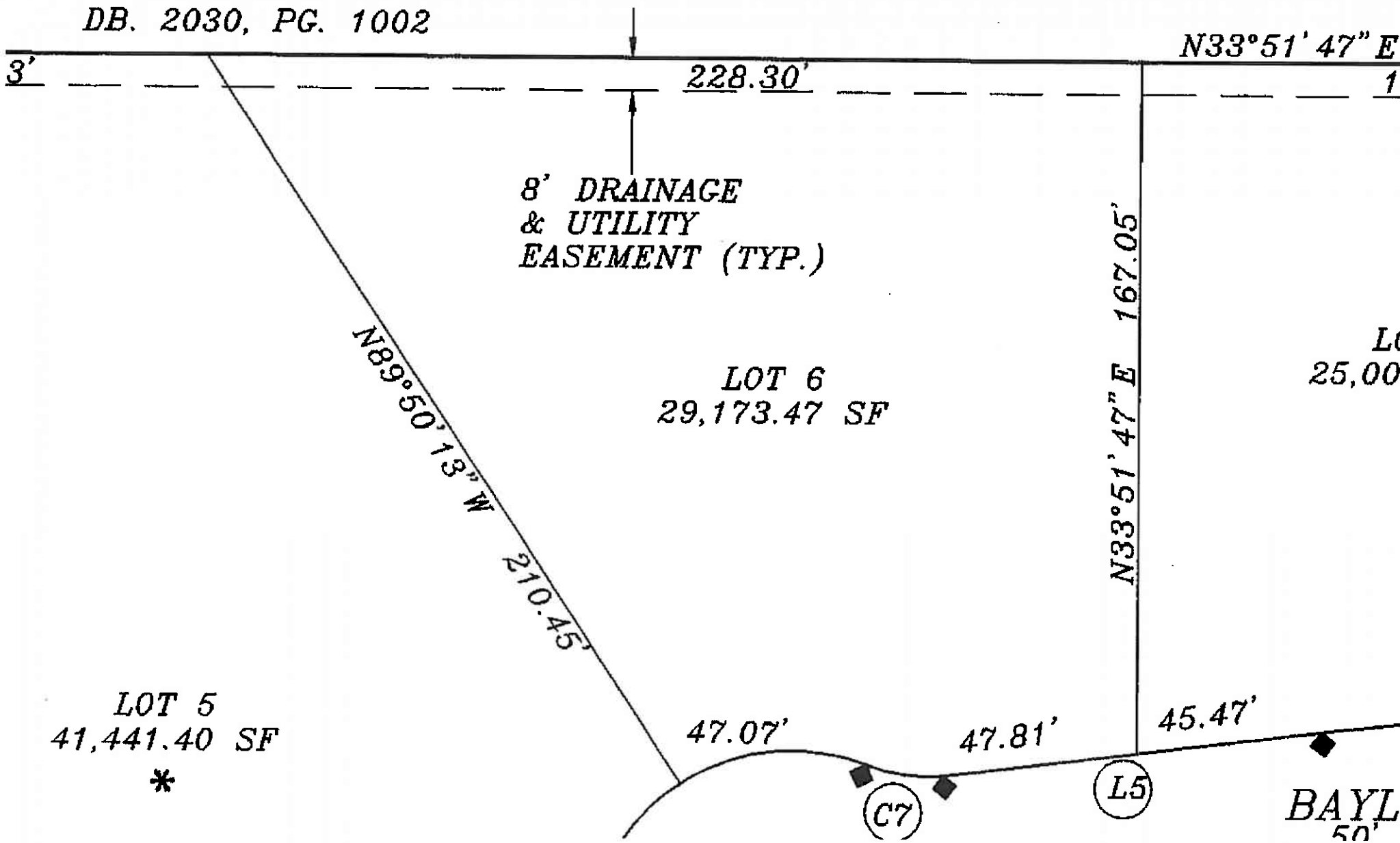


APPROVED BY THE  
 HENRICO COUNTY PLANNING  
 COMMISSION & DIRECTOR OF PLANNING  
 NOV 09 2006 *Karin D. Wilhite, AISC*  
 DATE ACTING SECRETARY

#753-735-4740 COUNTRYSIDE CORP. ZONED: R-1 DB. 1551 PC. 434 LOT 5  
 #753-735-5657 COUNTRYSIDE CORP. ZONED: R-2 DB. 1551, PC. 434 LOT 6  
 #753-735-0583 CIBBS, DAVID R. ZONED: R-2 DB. 3831, PC. 733 LOT 8  
 #753-735-6071 COUNTRYSIDE CORP. ZONED: R-2 DB. 1551, PC. 434 LOT 7  
 #753-735-5657 COUNTRYSIDE CORP. ZONED: R-2 DB. 1551, PC. 434 LOT 6  
 #753-735-7196 CIBBS, JOHN W. III ZONED: R-2 DB. 3562, PC. 1586 LOT 9  
 #753-735-0627 TAYLOR, DAVID H. ZONED: R-1 DB. 1892, PC. 458  
 #753-735-0057 TAYLOR, DAVID H. ZONED: R-1 DB. 1864, PC. 327  
 #753-735-6976 POINDESTER, JOHN S. III & HOPES ZONED: R-1 DB. 2104, PC. 2086 LOT 8  
 #753-735-6976 POINDESTER, JOHN S. III & HOPES ZONED: R-1 DB. 2104, PC. 2086 LOT 9  
 #753-735-6976 POINDESTER, JOHN S. III & HOPES ZONED: R-1 DB. 2104, PC. 2086 LOT 8  
 #753-735-6976 POINDESTER, JOHN S. III & HOPES ZONED: R-1 DB. 2104, PC. 2086 LOT 9

RECORDED 11/13/2006 PLATBOOK 122 PAGE 214

ZONED: R-1  
DB. 2030, PG. 1002

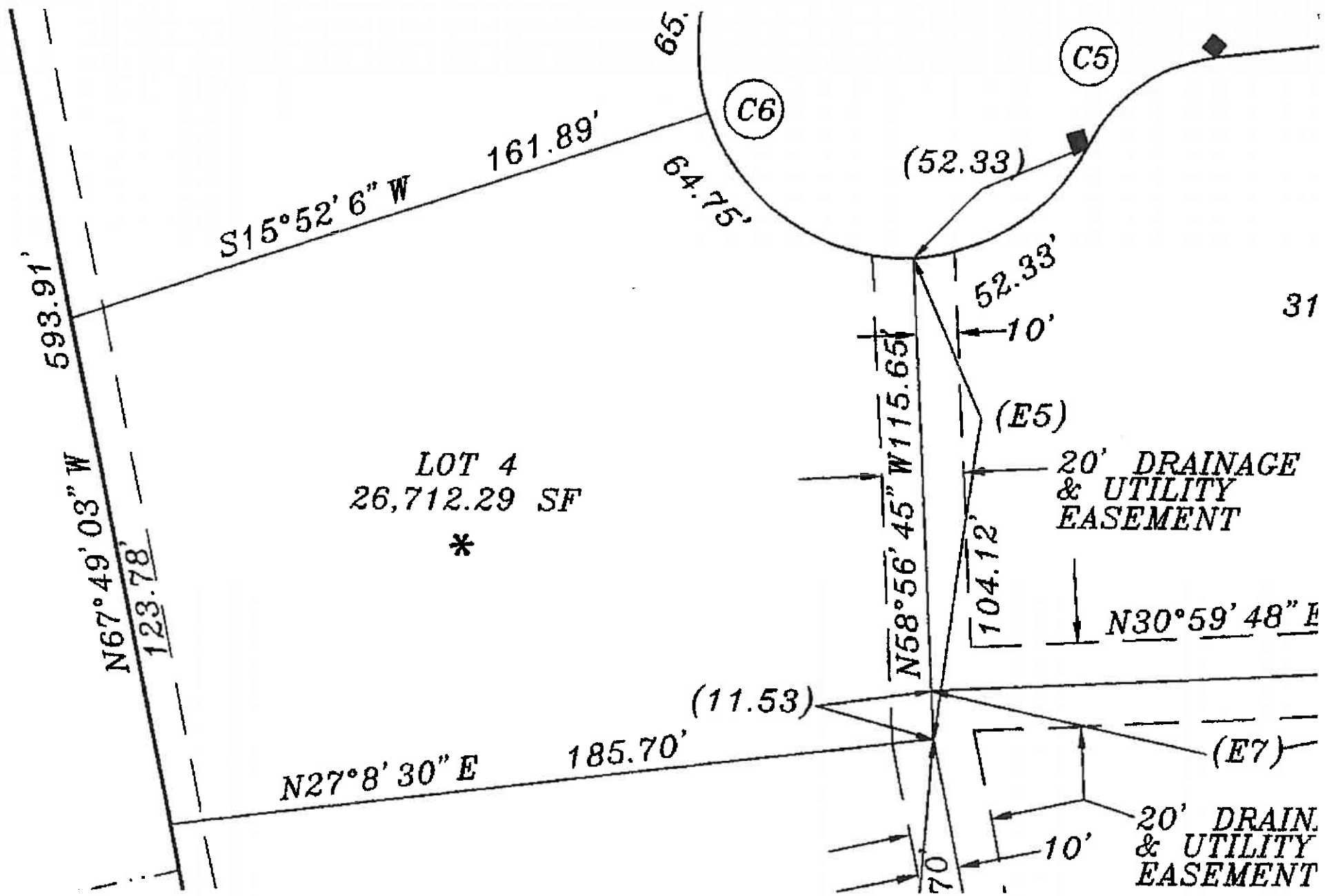


LOT 5  
41,441.40 SF  
\*

LOT 6  
29,173.47 SF

LOT 1  
25,000 SF

Countryside Glen  
Lot 6



Countryside Glen  
Lot 4